

試驗報告 Test Report

號碼(No.) : KA/2019/40525 日期(Date) : 2019/04/12

頁數 (Page) : 1 of 4

逸威國際貿易有限公司

E-WELL INTERNATIONAL TRADING CO., LTD.

臺南市安平區建平十五街30號

NO. 30, JIANPING 15TH ST., ANPING DIST., TAINAN CITY 708 TAIWAN(R.O.C)

以下測試樣品係由申請廠商所提供及確認 (The following sample(s) was/were submitted and identified by/on behalf of the applicant as):

送樣廠商(Sample Submitted By) : 逸威國際貿易有限公司 (E-WELL INTERNATIONAL TRADING CO., LTD.)
樣品名稱(Sample Description) : 高碳鋼線
收件日期(Sample Receiving Date) : 2019/04/03
測試期間(Testing Period) : 2019/04/03 to 2019/04/12

測試需求(Test Requested) :

依據客戶指定，參考RoHS指令2011/65/EU Annex II測試鎘、鉛、汞、六價鉻。(As specified by client, with reference to RoHS Directive 2011/65/EU Annex II to determine Cadmium, Lead, Mercury, Cr(VI) contents in the submitted sample(s).)

測試方法(Test Method) : 請參閱下一頁 (Please refer to following pages).

測試結果(Test Results) : 請參閱下一頁 (Please refer to following pages).


報告簽署人/張伯睿/博士/技術經理
Ray Chang, Ph.D./Manager -Tech
Signed for and on behalf of
SGS Taiwan Limited
化學實驗室-高雄/Chemical Laboratory Kaohsiung



試驗報告

Test Report

號碼(No.) : KA/2019/40525 日期(Date) : 2019/04/12

頁數 (Page) : 2 of 4

逸威國際貿易有限公司

E-WELL INTERNATIONAL TRADING CO., LTD.

臺南市安平區建平十五街30號

NO. 30, JIANPING 15TH ST., ANPING DIST., TAINAN CITY 708 TAIWAN(R.O.C)

測試結果(Test Results)

測試部位(PART NAME)No. 1 : 銀色金屬 (SILVER COLORED METAL)

測試項目 (Test Items)	單位 (Unit)	測試方法 (Method)	方法偵測 極限值 (MDL)	結果 (Result)
				No. 1
鎘 / Cadmium (Cd)	mg/kg	參考IEC 62321-5: 2013方法, 以感應耦合 電漿原子發射光譜儀檢測. / With reference to IEC 62321-5: 2013 and performed by ICP-AES.	2	n. d.
鉛 / Lead (Pb)	mg/kg		2	n. d.
汞 / Mercury (Hg)	mg/kg	參考IEC 62321-4:2013+AMD1:2017, 以感應 耦合電漿原子發射光譜儀檢測. / With reference to IEC 62321- 4:2013+AMD1:2017 and performed by ICP- AES.	2	n. d.
六價鉻 / Hexavalent Chromium Cr(VI)(#2)	µg/cm ²	參考IEC 62321-7-1:2015, 以UV-VIS檢測. / With reference to IEC 62321-7-1:2015 and performed by by UV-VIS.	0.10	n. d.

備註(Note) :

1. mg/kg = ppm ; 0.1wt% = 1000ppm
2. n. d. = Not Detected (未檢出)
3. MDL = Method Detection Limit (方法偵測極限值)
4. (#2) =
 - a. 當六價鉻結果大於0.13 µg/cm², 表示樣品表層含有六價鉻. / The sample is positive for Cr(VI) if the Cr(VI) concentration is greater than 0.13 µg/cm². The sample coating is considered to contain Cr(VI).
 - b. 當六價鉻結果為n. d. (濃度小於0.10 µg/cm²), 表示表層不含六價鉻. / The sample is negative for Cr(VI) if Cr(VI) is n. d. (concentration less than 0.10 µg/cm²). The coating is considered a non-Cr(VI) based coating.
 - c. 當六價鉻結果介於 0.10 及 0.13 µg/cm² 時, 無法確定塗層是否含有六價鉻. / The result between 0.10 µg/cm² and 0.13 µg/cm² is considered to be inconclusive - unavoidable coating variations may influence the determination.

試驗報告 Test Report

號碼(No.) : KA/2019/40525 日期(Date) : 2019/04/12

頁數 (Page) : 3 of 4

逸威國際貿易有限公司

E-WELL INTERNATIONAL TRADING CO., LTD.

臺南市安平區建平十五街30號

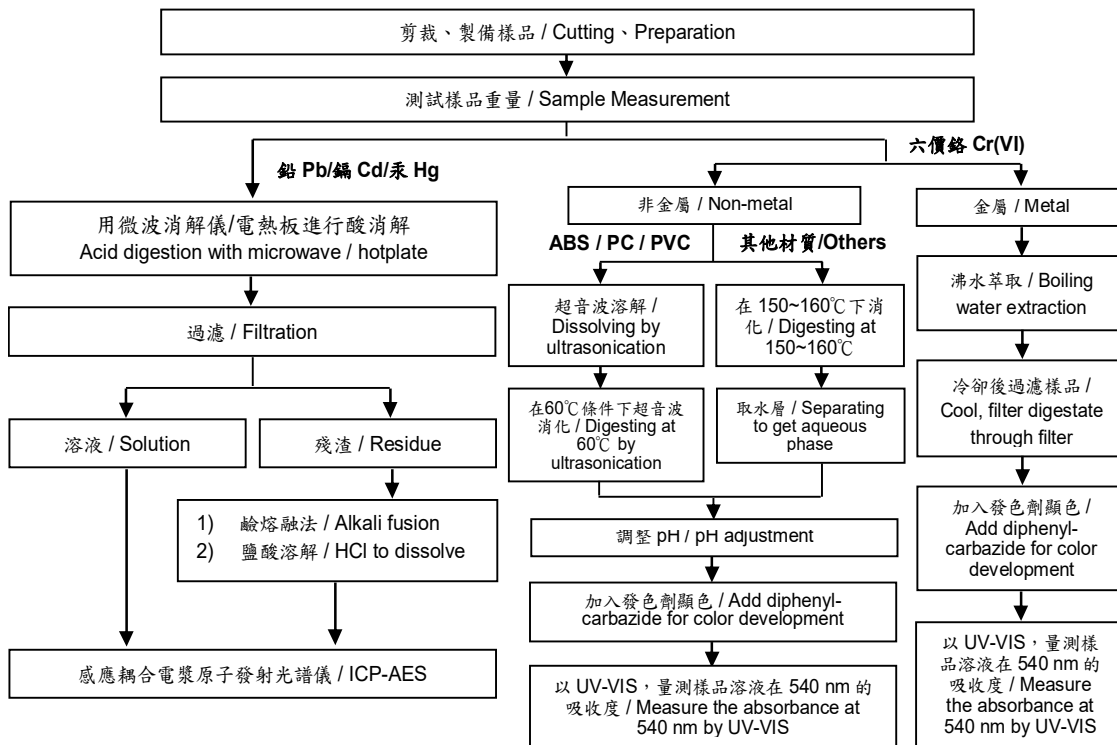
NO. 30, JIANPING 15TH ST., ANPING DIST., TAINAN CITY 708 TAIWAN(R.O.C)

重金屬流程圖 / Analytical flow chart of Heavy Metal

根據以下的流程圖之條件，樣品已完全溶解。(六價鉻測試方法除外)

These samples were dissolved totally by pre-conditioning method according to below flow chart. (Cr⁶⁺ test method excluded)

- 測試人員：劉俊宏 / Technician : Jony Liu
- 測試負責人：張伯睿 / Supervisor: Ray Chang



試驗報告 Test Report

號碼(No.) : KA/2019/40525 日期(Date) : 2019/04/12

頁數 (Page) : 4 of 4

逸威國際貿易有限公司

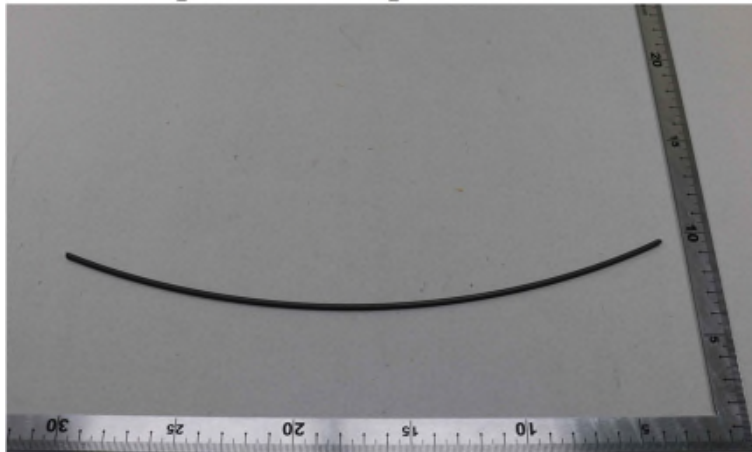
E-WELL INTERNATIONAL TRADING CO., LTD.

臺南市安平區建平十五街30號

NO. 30, JIANPING 15TH ST., ANPING DIST., TAINAN CITY 708 TAIWAN(R.O.C)

* 照片中如有箭頭標示，則表示為實際檢測之樣品/部位。 *
(The tested sample / part is marked by an arrow if it's shown on the photo.)

KA/2019/40525



** 報告結尾 (End of Report) **